



INSTALLATION MANUAL - WPS20-U4N-FD-PC

IMPORTANT: READ ALL INSTRUCTIONS BEFORE THE INSTALLATION

⚠ WARNING



- Before starting use of the fixture, please check if the fixture was damaged during transportation. If any damage shown, please do not install or use it.
- The products itself and all its component should not be mechanically stressed.
- Installation must not damage or destroy conducting paths or other parts of the product.
- Installation of LED product (with power supplies) needs to be made with regards to all applicable electrical and safety standards. Only qualified personnel should be allowed to perform installations.
- Correct electrical polarity needs to be observed. Wrong polarity may damage or destroy the LED products.
- If fixing on metallic or otherwise conductive surfaces, there should be an electrical insulator between the product and the mounting surface.
- All LED's are static sensitive. Precautions should be taken to ensure that LED's are well protected from ESD during handing even though the chips are safe in low static-electric discharge events.
- DO NOT operate LED's in reverse bias.
- Damaged by corrosion will not be honored as a materials defect claim. It is the user's responsibility to provide suitable protection against corrosive agents such as moisture and condensation and other harmful elements is taken.
- Identify positive (+) and negative (-) outputs of the power supply by using a multimeter.
- Electrical connection should be in a dry area unless adequately sealed.
- This product series emits high light output. Do not look directly into the light emitting area. Direct exposure to the light over an extended time period may harm eyes.
- If the external flexible cable or cord of this luminaire is damaged, it shall be exclusively replaced by the manufacturer or his service agent or similar qualified person in order to avoid hazard.

Part No.	Input Voltage	Frequency	Power	Rated Current
WPS20-U4N-FD-PC	AC100-277V	50 / 60Hz	20W	0.3A

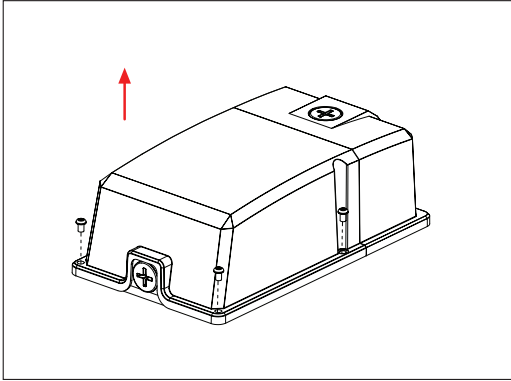
INSTALLATION SURFACE MOUNTING

- Do not remove any part of the fixture.
- Specification please see the label on fixture.
- Use expansion bolts to secure the fixture on mounting surface.
- Keep enough length wires to ensure adjusting angle unhindered.
- Connect wires into wiring terminal: White wire to "Neutral" terminal, Black wire to "Live" terminal, yellow/green wire to "Ground" terminal; and fix them by wire nuts.
- Terminal block to be used shall conform to UL standard; and shall be specified as following:
 - the type of terminal: screw / screwless;
 - number of terminals: 3 poles;
 - rated voltage: Min. 277V
 - rated connecting capacity: 18AWG
 - any necessary preparation of the ends conductors: the length of exposed ends of conductors shall not more than 8 mm;
 - any fixing method: fixed inside the connecting box
- This product can be installed on the ground.

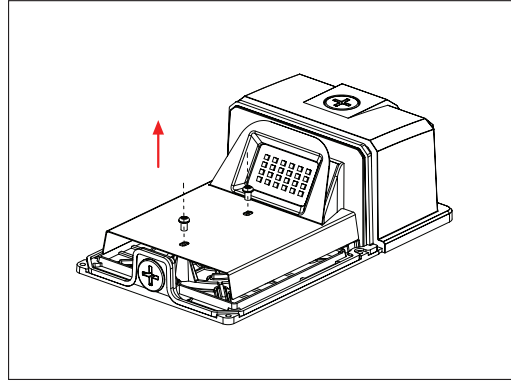


IMPORTANT: READ ALL INSTRUCTIONS BEFORE THE INSTALLATION

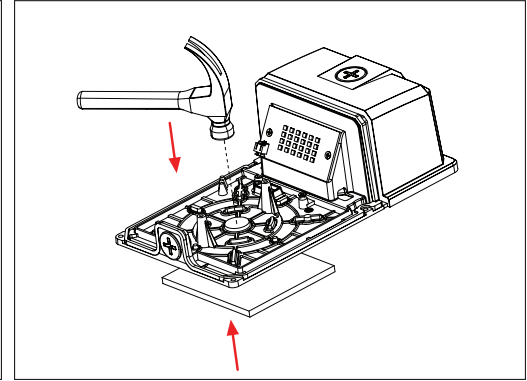
INSTALLATION INSTRUCTION



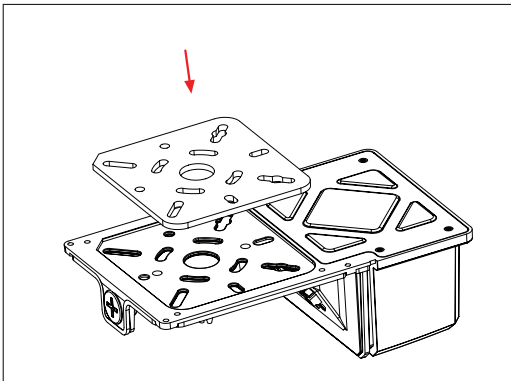
1. Use screwdriver to remove the screws of fixture cover, and then take down the cover.



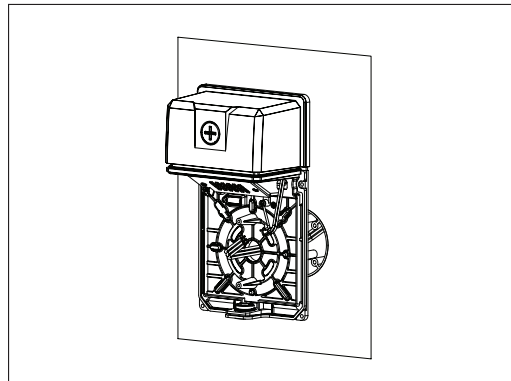
2. Use screwdriver to remove the reflector screws, and then remove the reflector.



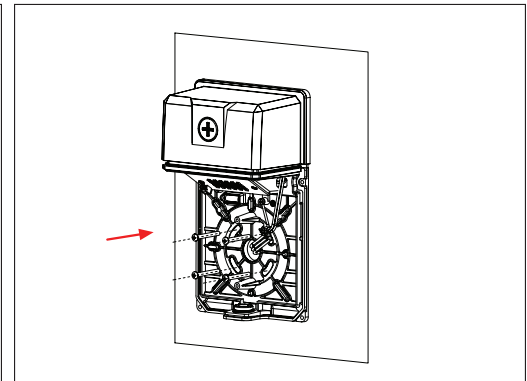
3. Put the gasket on the concave side of the fixture. It is used to avoid the damage of back shell when it struck by hammer. Then hammer the plugs of the cable entry and mounting hole.



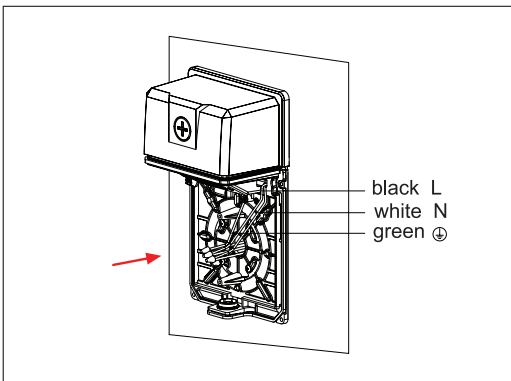
4. Attach the gasket to the back shell. Attention: the hole on both should be matched.



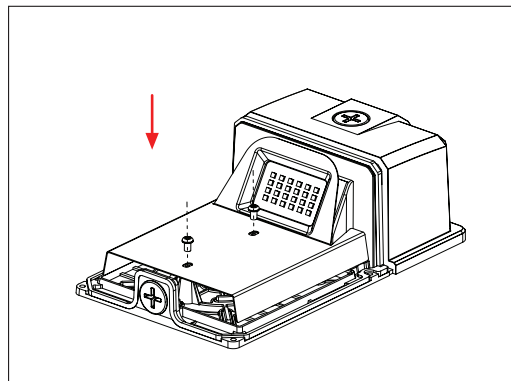
5. Pass the input line in the junction box through the waterproof gasket and then pass it through the fixture base.



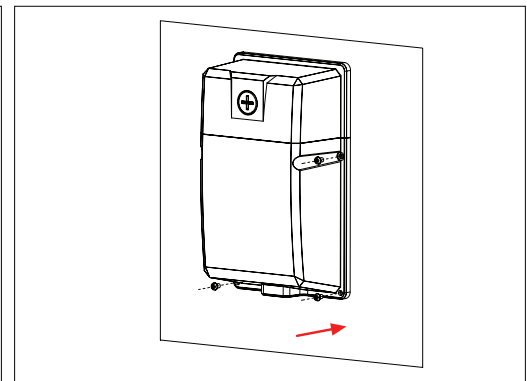
6. Lock the fixture base with the screw on the embedded junction box.



7. Connect the fixture input line, then put the connected wires into the embedded junction box.



8. Screw down the reflector with screws.



9. Use screws to tighten up the fixture, then installation completed.